



DPMConnect4Mac

V1.4.06

Instructions for use

Contents

SUPPORTED PLATFORMS	2
MAC PLATFORMS	2
DIGITAL POCKET MEMO	2
SUPPORTED LANGUAGE	2
INSTRUCTIONS	3
INSTALLATION	3
CONFIGURATION	4
Menulet	4
Open preferences	4
Help	4
About	4
DPM Connect Preferences	5
KNOWN LIMITATIONS	7
Device eject	7
Fast Mac computers	7

SUPPORTED PLATFORMS

MAC PLATFORMS

DPMConnect4Mac was tested with the following Mac operating systems:

- Mac OS X 10.10 Yosemite
- Mac OS X 10.11 El Capitan



For all listed operating systems, it is recommended that the latest update available is applied before installing DPMConnect4Mac.

DIGITAL POCKET MEMO

The new DPMConnect4Mac software supports following portable dictation devices:

- SpeechAir 1100
- Digital Pocket Memo 6000
- Digital Pocket Memo 7000 series
- Digital Pocket Memo 8000 series
- Olympus DS-5000
- Olympus DS-3400



Note: Connecting more than one device at the same time is not supported.

SUPPORTED LANGUAGE

The DPMConnect4Mac software is currently provided in English only.

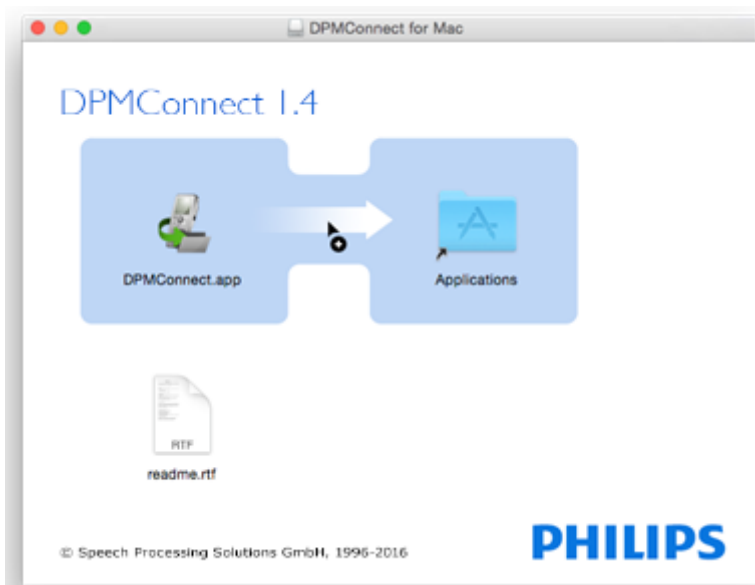
INSTRUCTIONS

INSTALLATION

1. Copy the file DPMConnect.dmg into your system



2. When opening the file you will see the following screen.



3. Drag and drop the icon **DPMConnect.app** onto the **Applications** icon.
To start the application browse to your applications folder and click on **DPMConnect.app**.

A new “**Menulet**” icon appears on the menu bar.



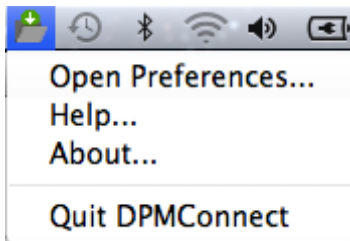
4. You have now successfully installed the application and DPMConnect4Mac is ready to use.

CONFIGURATION

The configuration of DPMConnect4Mac can be done from the **Menulet** icon.

Menulet

The DPMConnect 4 Mac menulet displays the following menu items:

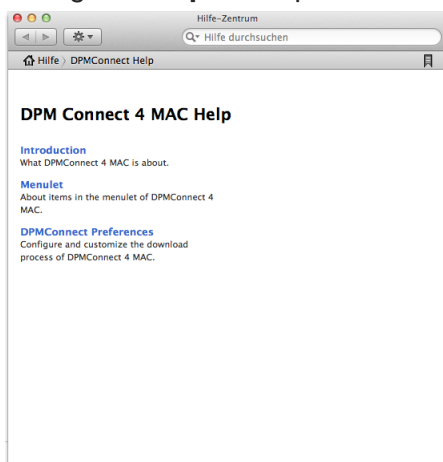


Open preferences

Clicking the **Open preferences** item displays the [DPMConnect Preferences](#) page.

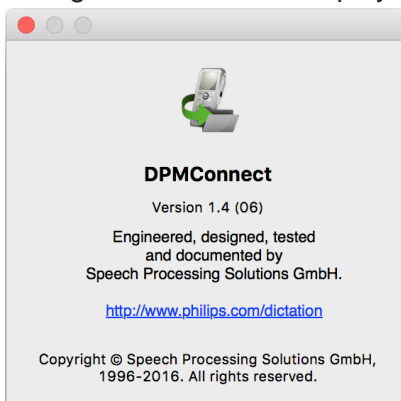
Help

Clicking the **Help** item opens the help system for DPMConnect4 Mac.



About

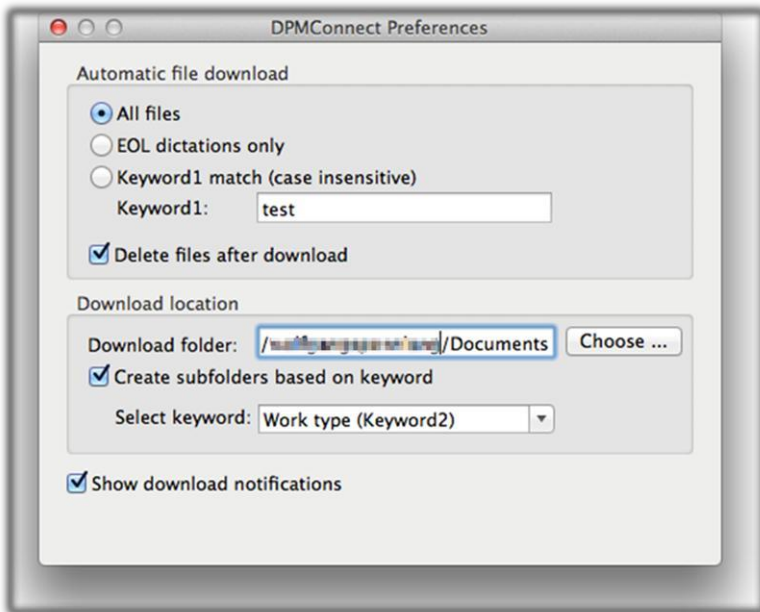
Clicking the **About** item displays a dialog with general version and copyright information.



DPM Connect Preferences

Here you can customize the download process from a portable recording device.

Note: Only the following file formats are supported to be downloaded: **.dss, .ds2**.



Automatic file download

Here the following options can be defined for downloading files from a recording device:

All files

Activate this option to enable all files to be downloaded automatically.

EOL dictations only

By activating this option, any files which have the EOL (End-of-Letter) indication are downloaded to the computer.

Note: This option is only supported with Philips .dss and .ds2 files.

Keyword1 match (case insensitive)

By activating this option, any dictation files with the specified keyword assignment are automatically transferred from the recording device to the computer when the device is connected to the PC

Note: Only keywords containing English characters and numbers are supported (a-z;A-Z;0-9).

Delete files after download

If you want to remove the downloaded files from the recording device so that you could free storage space on it, activate the **Delete files after download** option.

Note: Already existing files with the same name cannot be overwritten. In this case, a visual notification displays that some files have not be transmitted due to duplication problems. However, if the date and time of the file differs, then a new filename with suffix **_001** will be created.

Download location

The recording device files will be transferred to a selected local folder of the computer.

The DPMConnect4Mac application works only with local paths, however, you are also allowed to adjust any network paths (Finder\Go\Connect_to_server menu). After successful connection, this network path will be available in the Volumes folder and can be used as a local folder.

Create subfolders based on keyword

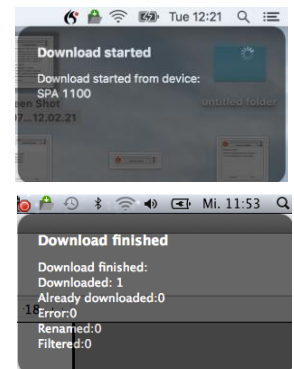
You can create subfolders based on selected keywords so that a group of files can be downloaded under one group.

Show download notifications

Here you can customize the appearance of some visual feedbacks during the download process.

By activating this option, you will receive a visual feedback during download the download process.

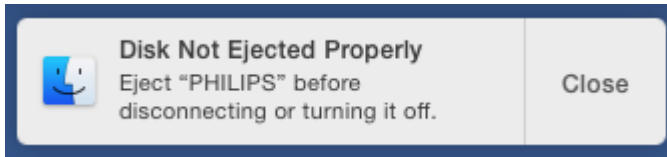
Note: In case of error occurrence or duplication, visual feedbacks always appear in the top-right corner of the display.



KNOWN LIMITATIONS

Device eject

When disconnecting the DPM from the Mac without ejecting the device from the Finder page before the Mac will show the “unsafe eject” message box.



Fast Mac computers

Some (fast) Macs show different timing behavior for USB devices, which can cause DPMConnect not to recognize a DPM on connection.

It is possible to modify DPMConnects´ info.plist to overcome issues like that.

Therefore do the following steps:

- 1.) Close DPMConnect
- 2.) Right click on the DPMConnect icon
- 3.) Select "Show Package Contents"
- 4.) Go to folder "Contents"
- 5.) Open Info.plist with TextEdit
- 6.) Change value for PSPDPMConnectDelay to 10 (instead of 3)
- 7.) Start DPMConnect4Mac
- 8.) Connect DPM to Mac

If the DPM is still not recognized, please try increasing PSPDPMConnectDelay again, or get in touch with the Speech Processing Solutions Support department.

July, 2016

Doc. No: SPS_T_2300/16067

Philips and the Philips' Shield Emblem are registered trademarks of Koninklijke Philips N.V. and are used by Speech Processing Solutions GmbH under license from Koninklijke Philips N.V.

All other trademarks are the property of their respective owners.

© 2016 Speech Processing Solutions GmbH. All rights reserved. Errors and omissions excepted.



EINZIGARTIG IN BERLIN - IN STUTTGART ZUHAUSE

Danke, dass Sie uns besucht haben !

Dieses Dokument wurde heruntergeladen
bei www.DIKTAT-STUTTART.de

Für die Richtigkeit der im Dokument angegebenen Daten, haftet ausschließlich der
angegebene Hersteller.

Gerne dürfen Sie uns jederzeit wieder besuchen oder bei Fragen auch telefonisch
kontaktieren.

Mit freundlichen Grüßen
Ihr Team von
DIKTAT-STUTTART
ppm-stuttgart • Diktiersysteme
Friedrichstraße 18 – 22, 70736 Fellbach

Tel.: 0711 / 34 16 93- 60
Fax: 0711 / 34 16 93- 66
e-mail: ppm@ppm-stuttgart.de

Sie haben Fragen ?

Sprechen Sie uns einfach an.
Wir stehen Ihnen jederzeit
gerne zur Verfügung.



Büro Stuttgart

Andreas Ester

GF & Kundenbetreuung
Telefon 0711 - 34 16 93 60



Büro Berlin

Alexander Schnell

Key-Account Manager Diktierlösungen
Telefon 0711 - 34 16 93 63